

Planning Guide & General Price List

“A Caring Tradition & Celebration of Life Since 1840”

Our family story is one rich with tradition. The legacy of excellence started in 1840 in Maineville, Ohio with Seth G. Tufts, who did a bit of everything under the shingle of S.G. Tufts Undertaking and Carriage Shop. Today, we honor that tradition of excellence with knowledge and compassionate men and women who respect your right to choose without undue influence and who believe the most valuable thing we own is our reputation. Every staff associate is expected and empowered to do anything it takes to serve your family well. The Tufts Schildmeyer Family developed a mission statement “A Caring Tradition and Celebration of Life since 1840” that they live by with compassion, integrity and exceptional attention to details.



Seth G. Tufts

Oscar Tufts

Lawrence Tufts

Bob and Marilyn Tufts
Schildmeyer

Larry Sr. Larry Jr., Terry
Schildmeyer

www.tuftsschildmeyer.com



Our Standard Of Excellence

Dear Friend,

You have many choices of firms to care for you, your family, and friends, and we are grateful you have chosen Tufts Schildmeyer Family Funeral Home. Our high standards are voluntary, intended to bring excellence and compassion during some of life's most difficult and painful times. We believe the experience of a loved one's death is a sacred and deeply meaningful time and when we live up to your high expectations, we help you grieve, cope, and move forward. Since 1840, our family has believed the most valuable thing we own is our good reputation. We have become the most preferred family-owned funeral home in this region as a result of the support we have received from families like yours. We can assure you we will make these times for you and your family much easier.

Sincerely,

The Schildmeyer Family



TABLE OF CONTENTS

A Time of Need	3
Why Choose Us	4
The Tufts Schildmeyer Difference	5
Our Code of Good Practice	6
General Price List	
Itemized Services	8-11
Burial or Entombment Packages	12-13
Other Related Funeral Costs	14
Notes Page	15
Casket Price List	16-17
Outer Burial Price List	18-19
A Selection of Personalized Merchandise	20-22
When Your Choice is Cremation	23
Cremation & Inurnment Packages	24-29
Ohio Revised Code	30
Our Cremation Center	31
Choosing A Riverview ® Monument	32-35
Choosing A Payment Plan	36
Aftercare & Preneed Services	37
What Comes Next?	38-39
Family Follow Up Checklist	40
Companion Care Pet Cremation	41

All of us at Tufts Schildmeyer Family Funeral Home extend to you and your family our deepest sympathy over the passing of your loved one. We know that this is a very challenging time and that planning a funeral is one of the most difficult tasks one will ever have to do. With this in mind, our experienced professionals are prepared to help you make the many decisions necessary in order to provide a respectful and meaningful farewell for your loved one. Our goal is to truly understand your wishes and the wishes of the deceased as we guide you through this important process while presenting to you all your options for creating a uniquely personal service that reflects the cherished life that you are honoring.

Along with being a General Price List, this booklet is designed to give you a full explanation of all the options available to you when planning and personalizing a funeral. With the support of our trained funeral professionals, we hope that this experience, although a difficult one, will be a memorable and cherished occasion shared with family and friends.

Our Licensed Funeral Directors

The Schildmeyer Family has gathered a highly trained staff of outstanding professional funeral directors and embalmers dedicated to providing exceptional service to each family. We thank you for your trust and confidence in our services.



**Julie
Maag
Tipton**



**Amber
Shelton**



**Sydney
Theriot**



**Alison
Williams**



**Talia
Arey**



**John
Keller**



**Tim
King**



**Mark
Tipton**



**Phil
Hopper**

Why Choose Us

Family Owned & Operated

Since 1840, we have proudly been committed to being a family owned and independent funeral home. We respect your right to choose without undue influence. You can expect no pressure from our kind, compassionate and non-commissioned funeral directors.

Personalized Service

Our staff is specially selected and trained to facilitate services that reflect your needs. Our goal is to listen, suggest, organize and carry out ceremonies that will be comforting and meaningful.

Options

We provide more options than any other firm in this area because we stay current with the future trends in the funeral industry and we pride ourselves on having the foresight needed to anticipate your needs and the needs of the deceased. We itemize and package these services so you can create a memorable ceremony that is a personal reflection of your loved one and the family.

Facilities

We offer the highest level of facilities in the Cincinnati area. Our locations feature state-of-the art sound and video capability. Our buildings are clean and immaculate.

Leader in Cremation

If you are considering cremation, please ask these two questions:

- Who owns the crematory? At Tufts Schildmeyer, we own & operate our own state-of-the art crematory
- How can you assure me that you cremate responsibly? At Tufts Schildmeyer, we control the entire process from start to finish and only cremate one person at a time, adhering to strict standards such as the Cremation Code of Ethics by CANA, Certified Operators, Licensed Personnel, and the encouragement of a family's personal inspection.

The Tufts Schildmeyer Difference

Price and Value

We diligently strive to uphold the highest of standards among our personnel, our services and our products with the understanding that we have one opportunity to carry out our work caring and accurately. For over 185 years we have consistently and successfully maintained this level of quality and continue to pride ourselves on exceeding the expectations of those we serve. Our Directors consistently provide outstanding care to those we serve. Choosing competence, choosing people who care, choosing the best value for what you spend, you will never regret choosing Tufts Schildmeyer Family Funeral Homes.

Our value makes a difference.

People

We believe that we have the finest staff possible, dedicated to providing the highest quality funeral service in the Cincinnati area. We thank you for your trust and confidence in our services. *Our people make a difference.*

Service

Every family we serve receives a follow-up survey and we are proud of our 99% retention and approval rate. These responses confirm the importance of offering quality and value to those we serve. *Our service makes a difference.*

Facilities

We believe we offer the finest facilities in the Cincinnati area. With beautiful, comfortable, spacious and technology advanced locations along with ample parking make us the leader in the area in facilities.

Our facilities make a difference.

Local Family Ownership

We live and work in this community. The Tufts Schildmeyer family is in its sixth generation of leadership. *Our family ownership makes a difference.*



Our Code of Good Practice

As funeral directors, our calling imposes upon us special responsibilities to those we serve and to the public at large. An important obligation is to provide information so that everyone can make knowledgeable decisions about funeral and cremation services.

In accepting our responsibilities, and as a condition of our affiliation with Selected Independent Funeral Homes, we affirm the following standards of good practice and hereby pledge:

- To provide the public with information about funeral and cremation services, including prices, functions and the responsibilities of funeral directors
- To make services available in as wide a range of price categories as necessary to meet the needs of all segments of our community, and to affirmatively extend to everyone the right to inspect and freely consider them all
- To quote conspicuously in writing the charge for every arrangement offered, and to clearly identify the services, facilities, equipment and merchandise included in such quotations
- To adhere to the highest standard of conduct in all aspects of business
- To afford an ongoing opportunity to all persons to discuss or arrange funerals in advance
- To ensure that pre-need contracts fully disclose those items which are guaranteed and those which are nonguaranteed, in terms that are clear and easy to understand
- To manage prepaid funds responsibly, ensuring that promises are honored and expectations are met, within the letter and spirit of the law
- To make no representation, written or oral, which may be false or misleading and to apply a standard of honesty in all dealings
- To furnish each family, at the time arrangements are made, with a written memorandum of charges and to make no additional charge without their approval
- To respect all faiths, creeds and customs, and to give full effect to the role of the clergy/celebrant
- To maintain qualified and competent staff, appropriate facilities and suitable equipment required for comprehensive funeral and cremation services

To assure those we serve the right of personal choice in making service arrangements We pledge to conduct ourselves at all times in a manner deserving of the public trust, and to provide a copy of this Code of Good Practice to the families we serve.

*Tufts Schildmeyer
Family Funeral Home*

*129 N. Riverside Drive
Loveland, Ohio 45140
Phone: (513) 683-2430
Fax: (513) 683-9632
staff@tuftsschildmeyer.com*



General Price List

◆ ◆ ◆ ◆ ◆ ◆ ◆ ◆ ◆ ◆ ◆ ◆ ◆ ◆ ◆ ◆ ◆ ◆ ◆

April 1, 2025

These prices are effective April 1, 2025 but are subject to change without notice. The goods and services shown below are those we can provide to our customers. You may choose only those items you desire. However, any funeral arrangements you select will include a charge for our basic service and overhead. If legal or other requirements mean you must buy any items you did not specifically ask for, we will explain the reason in writing on the statement describing the funeral goods and services you selected.

⁸ *Our Services and Costs*

Professional Services

BASIC SERVICES OF FUNERAL DIRECTOR & STAFF 2485.00

- Our basic service fee includes, but is not limited to staff and facilities to respond to initial requests for service 24 hours every day, consultation with the survivors, coordinating service plans with cemetery, crematory and /or other parties involved in the final disposition of the deceased, sheltering of the deceased, consultation and assistance with procuring various death benefits, securing necessary permits, accounting and billing, regulatory compliance, legal and audit fees, postage, printing and supplies, telephones, insurance, salaries and benefits for our staff, various county, state and federal taxes and fees. This fee for our basic services and overhead will be added to the total cost of the funeral arrangements you select. This fee is already included in our charges for direct cremations, immediate burials and forwarding or receiving the remains.

EMBALMING 965.00

- Except in certain special cases, embalming is not required by law. Embalming may be a necessary, however, if you select certain funeral arrangements, such as a funeral with viewing. If you do not want embalming, you usually have the right to choose an arrangement that does not require you pay for it, such as a direct cremation or immediate burial.

- Total Tissue donation reconstruction (billed to donor center) 295.00

OTHER PREPARATION OF THE REMAINS 375.00

- Includes cosmetology, any restorative art, hairdressing, dressing and casketing of the remains and any other treatments necessary for viewing.
- Bathing and Sanitary Procedures for Unembalmed Remains 375.00

REFRIGERATION 195.00

- Includes refrigeration and sheltering of the remains for bodies not embalmed until final disposition.

“A Caring Tradition & Celebration of Life Since 1840”

Transportation

Unless otherwise noted, all transportation charges contained in the General Price List apply to the local area within a 25 mile radius of the funeral home. The charge for additional mileage is 2.50 per loaded mile.

TRANSFER OF REMAINS TO FUNERAL HOME 395.00

- Includes the local (within a 25 mile radius of the funeral home) removal of the remains from the hospital, nursing home, residence, Coroner's office, hospice or the airport. The charge for additional mileage is 2.50 per loaded mile.

FUNERAL COACH 375.00

- Includes transporting the remains to the place of disposition.

LIMOUSINE

- Includes a professional driver and vehicle
 - Sprinter or traditional limo available

Price quote only

FLOWER VEHICLE 195.00

- Used for transporting flowers and delivering service equipment.

PROFESSIONAL FUNERAL ESCORT

- Includes a uniformed motorcycle escort for the safety of the funeral procession.

- Within a 25 mile radius 250.00

- Long Distance escort outside 25 miles 350.00



“A Caring Tradition & Celebration of Life Since 1840”

Facilities

Our services includes the gathering and ceremony setup and equipment, display of floral arrangements, parking lot assistance, supervising and coordinating the gathering and funeral ceremony, attending to the family needs, phone inquiries, continual and final maintenance.

SETUP, EQUIPMENT & STAFF FOR A GATHERING	700.00
SETUP, EQUIPMENT & STAFF FOR A FUNERAL CEMEMONY	795.00
SETUP, EQUIPMENT & STAFF FOR A GATHERING AT ANOTHER LOCATION	800.00
SETUP, EQUIPMENT & STAFF FOR A FUNERAL CEREMONY AT ANOTHER LOCATION	895.00
SETUP, EQUIPMENT & STAFF FOR A GRAVESIDE SERVICE	495.00
SETUP, EQUIPMENT & STAFF FOR A MEMORIAL CEREMONY	1195.00
SETUP, EQUIPMENT & STAFF FOR A GATHERING & FUNERAL CEREMONY ON THE SAME DAY	1495.00
OVERTIME FOR SATURDAY AND SUNDAY SERVICES	350.00

Due to the respect of local clergy, people in the community, cemetery staff, vault company personnel and our staff, there will be no funeral ceremonies on Sunday.

“A Caring Tradition & Celebration of Life Since 1840”

Additional Service Options

ALTERNATIVE SERVICE PACKAGE 4850.00

- Includes the professional services of the funeral director and staff, local removal, securing necessary authorizations, signatures and permits, embalming or refrigeration, other preparation of the remains, private family viewing, graveside service, and use of a hearse.

IMMEDIATE BURIALS 3800.00 to 4795.00

Our charge for an immediate burial **without ceremony** includes: professional services of the funeral director and staff, local removal, securing necessary authorizations, signatures and permits, refrigeration, and use of a hearse.

- Immediate Burial with container provided or selected by purchaser 3800.00
- Immediate Burial with a 20 gauge non-gasketed metal casket 4795.00

FORWARDING OF REMAINS TO ANOTHER FUNERAL HOME 1195.00

- Includes the basic services of the funeral director and staff, local removal, securing necessary authorizations, signatures and permits, embalming, air tray, and transportation to the airport.

RECEIVING OF REMAINS FROM ANOTHER FUNERAL HOME 3255.00

- Includes the professional services of the funeral director and staff, transfer of remains from the airport, transportation to the cemetery, and use of a hearse.

SERVICES OF THE FUNERAL DIRECTOR FOR DISINTERMENT AND RE-INTERMENT 950.00

- This service includes minimum services of staff, secure legal permits, and coordinate and supervise disinterment and re-interment within 25 miles.
- *Does not include probate court fees, merchandise, cemetery expenses/fees, cremation fees, casket disposal fees and any additional third party expenses

SERVICES CONNECTED WITH ANATOMICAL DONATION

- BASIC BODY DONATION SERVICES 795.00
 - Includes basic services of the funeral director and staff, local removal, securing necessary authorizations, signatures and permits, refrigeration, and transportation to UC Medical School.
- MEMORIAL SERVICE WITH BODY DONATION 1990.00
 - Includes basic services of the funeral director and staff, local removal, securing necessary authorizations, signatures and permits, refrigeration, transportation to UC Medical School, and a memorial service. Other services and funeral goods may be selected at an additional cost.

“A Caring Tradition & Celebration of Life Since 1840”

Burial or Entombment Packages

Traditional Package

6195.00

Includes the professional services of the funeral director and staff, local removal, securing necessary authorizations, signatures and permits, embalming, other preparation of remains, visitation and gathering, funeral ceremony, flower vehicle for transporting and delivering service equipment and flowers, and use of a hearse.

The Traditional Package also includes a choice of a register book package, the obituary on the funeral home website, professional funeral motorcycle escort and a Journey of Life video tribute (100-150 unframed photos).

Register Book Package



Online Memorial Page



Motorcycle Escort



Journey of Life Video Tribute



Burial or Entombment Packages

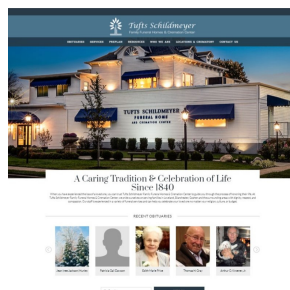
Core Package

5895.00

Includes the professional services of the funeral director and staff, local removal, securing necessary authorizations, signatures and permits, embalming, other preparation of remains, visitation and gathering, funeral ceremony, flower vehicle for transporting and delivering service equipment and flowers, and use of a hearse.

The Core Package also includes the obituary on the funeral home website and a Journey of Life video tribute (100-150 unframed photos).

Online Memorial Page



Journey of Life Video Tribute



Other Related Funeral

Costs

Honorariums

- Clergy suggested minimum 150.00 - 200.00
- Church Fees as quoted

Third Party Business Expenses

- Ohio Sales Tax—Hamilton County 7.80%
- Cemetery/Crematory Costs as quoted
- Newspaper Obituary as quoted
- Certified Ohio Death Certificate per copy 35.00
- Affidavit Filing Fee on Death Certificate 35.00
- Certified Kentucky Death Certificate per copy 20.00
- USPS Certified Mail of Death Certificates 15.00
- Ohio Permit for Final Disposition 3.00
- Flowers as quoted
- VFW Memorial Team suggested minimum 150.00



Bill Hounshell
Funeral Celebrant

A funeral celebrant is a person who is trained to meet the needs of families during their time of loss. A funeral celebrant will schedule a special family time for the family to share memories, and special moments in the loved one's life. Providing a funeral service that is personalized to reflect the personality and life style of the deceased is a vital part of beginning the process of grieving and ease the pain of your loss.

Notes & Reminders





Tufts Schildmeyer Family Funeral Home

*129 N. Riverside Dr.
Loveland, Ohio 45140
(513) 683-2430*

Casket Price List

(These prices are effective as of April 1, 2025 but thereafter subject to change without notice.)

The Eleanor Champagne	Stainless Steel	Champagne Velvet	4495.00
The Sanctuary	Stainless Steel	Blue Velvet	3795.00
The Majestic Rose	Stainless Steel	Pink Velvet	3795.00
The Gemini Orchid	18 Gauge	Misty Rose Velvet	3095.00
The Sterling Ebony	18 Gauge	White Velvet	2995.00
The Sterling Cherry	18 Gauge	White Velvet	2995.00
The Sterling Silver	18 Gauge	White Velvet	2995.00
The Sterling Copper	18 Gauge	Almond Velvet	2995.00
The Triton Blue	18 Gauge	White Velvet	2995.00
The Going Home	18 Gauge	Light Blue Velvet	2995.00
The Silver Rose	18 Gauge	Pink Velvet	2995.00
The Carnation	18 Gauge	Pink Velvet	2895.00
The Hampton	18 Gauge	White Velvet	2795.00
The Kessler	18 Gauge	Eggshell Crepe	2795.00
The Lexington Ebony	18 Gauge	White Velvet	2795.00
The White Rose	18 Gauge	Pink Crepe	2695.00
The Triton Gold	18 Gauge	White Velvet	2695.00
The Harmony Lilac	18 Gauge	Pink Velvet	2695.00
The Sheffield	18 Gauge	Rosetan Crepe	2695.00
The Patriot Gunmetal	18 Gauge	White Crepe	2695.00
The New Horizon Bronze	18 Gauge	Rosetan Crepe	2695.00
The Spartan Silver	20 Gauge	White Crepe	2595.00
The Charles Metallic Blue	20 Gauge	White Crepe	2595.00
The Homeward Met. Blue	20 Gauge	Light Blue Crepe	2595.00
The Franklin Copper	20 Gauge	Rosetan Crepe	2495.00
The Alex	20 Gauge	White Crepe	1895.00

Hardwood Caskets

The Westminster	Cherry	Almond Velvet	3595.00
The Fairbanks	Pecan	Almond Velvet	3495.00
The McKenzie	Poplar	Rosetan Crepe	3095.00
The Timberland	Pine	White Crepe	3095.00
The Stouffer	Poplar	White Velvet	2895.00

Alternative Containers

Elite Seagrass Casket	Natural Cotton	2595.00
Emerson Tan Cremation Container	Ivory Crepe	605.00
Simple Nature Container	Ivory Velvet	550.00
Oversize Viewing Cremation Container	Minimum Crepe	440.00
Vista Series Theme Cremation Container	Minimum Crepe	350.00
Viewing Cremation Container	Minimum Crepe	215.00
Casket shipping Container	Meets Airline regulations	195.00
Minimum Cardboard Container	No Interior Lining	100.00

Disclaimer of Warranties: Tufts Schildmeyer Family Funeral Homes makes no representations or warranties regarding the caskets listed on all pages. The only warranties, expressed or implied, granted in connection with caskets sold are the express written warranties, if any, extended by the manufacture thereof. Tufts Schildmeyer Family Funeral Home hereby expressly disclaims all warranties of merchantability and fitness for a particular purpose.



Paragon
Casket, Inc.

PrivateLabel
A Buchanan Group Company

Tufts Schildmeyer Family Funeral Home

*129 N. Riverside Drive
Loveland, Ohio 45140
(513) 683-2430*

Outer Burial Container Price List

(These prices are effective April 1, 2025 but thereafter subject to change without notice)

In most areas of the country, no state or local law makes you buy a container to surround the entire casket in the grave. However, many cemeteries ask that you have such a container so the grave will not sink in. Either a burial vault or grave liner will satisfy these requirements.

Single reinforced concrete products

Wilbert Venetian	ABS Marbelon Liner	2395.00
Wilbert Lifescape	ABS Marbelon Liner	2195.00
Wilbert Continental	Strentex Liner	1995.00
Wilbert Monticello	Plastic Liner	1895.00

Non-warranted concrete products

Baxter Monarch Concrete Box	1595.00
Baxter Tongue & Groove Top Box	1395.00
Baxter Flat Top Box—1pc. Lid	1395.00

Double reinforced concrete products

Wilbert Bronze Triune	ABS Trilon Liner	4495.00
Wilbert Copper Triune	ABS Trilon Liner	4495.00
Wilbert Cameo Rose SS	ABS Trilon Liner	3295.00
Wilbert Veteran SST	ABS Trilon Liner	3295.00
Wilbert Trojan SS	ABS Trilon Liner	3295.00

Triple reinforced concrete products

Wilbert Premium Bronze	ABS Trilon & Marbelon Liner	13095.00
-------------------------------	--	-----------------

Baxter Vault Company Schedule of Other Charges

Overtime for Saturday Burials	300.00
Holiday or Sunday overtime installations	1200.00
Grave service without vault purchase	750.00

Urn Vaults

Wilbert Stainless Steel Urn Vault	1595.00
Wilbert Venetian Urn Vault	1395.00
Wilbert Universal Urn Vault	1095.00
Crowne Urn Vault	225.00

A Selection of

Personalized

Merchandise

Life Tribute Memorial Packages

All packages include a Register Guest Book, 100 Memorial Folders, 50 Thank You Cards, 4 laminated Bookmarks and 1 Celebration of Life Candle.

	<u>Book Only</u>	<u>Box Set</u>
• Garden of Promise	135.00	255.00
• Chronicles	135.00	245.00
• Divine Flight	110.00	235.00
• Family Tree	110.00	235.00
• Go Rest High	110.00	235.00
• Ohio State	N/A	235.00
• Freedom Wings	110.00	220.00
• Peaceful Retreat	110.00	220.00
• Sacred / Immaculate Heart	100.00	220.00
• Homestead	110.00	210.00
• Sea of Tranquility	110.00	210.00
• Whispering Woods	110.00	210.00
• Beaches	100.00	210.00
• Northern Cardinal	100.00	210.00
• Angler's Glory	95.00	210.00
• Gardener's Glory	95.00	210.00
• Legends of Golf	95.00	210.00
• Enduring Gray	95.00	210.00
• Endless Grace	90.00	210.00
• Wildflowers	100.00	200.00
• Maroon Basic	40.00	180.00

Additional Items

The following additions can be added to all packages. These additions will be personalized and correspond to the Life Tribute Package chosen.

• Life Celebration Candle	45.00
• Laminated Bookmark per 4	20.00
• Memorial Folders per 100	75.00
• Prayer Cards per 100	130.00
• Personalized Thank You Cards per 25 (box)	35.00
• Standard Thank You Cards per 25 (box)	20.00

Journey of Life Video Tribute

150.00

This video tribute uses 100-150 unframed pictures and a selection of music. Price includes video setup, production and 1 copy of DVD and digital USB drive. As an added bonus, videos will be placed on our web-site.

- Additional reproductions on DVD 25.00
- Additional reproductions of digital USB drive 22.00
- Bookshelf Box Set 84.00
(Includes Printed photos (first 75), Waterproof DVD, CD of digital photos and professional keepsake box set)



Life Tribute Portrait

195.00

A copy of your professional quality photograph of your loved one can be transferred to a 16x20 canvas portrait and be displayed during the gathering.



Related Personalized Additions

- Personalized Casket Panel 195.00
- Wood Flag Case (Cherry or Oak) 75.00
- Temporary Grave Marker 35.00

Keepsake Pendants & Gifts

Hold a source of comfort in your hands to find peace in your heart. Pendants bring memories by holding a small portion of cremated remains, a lock of hair or dried ceremonial flowers. (Please ask for a full catalog of options.)



Thumbprint Jewelry

Legacy Touch thumbprint keepsakes are uniquely personal keepsakes, fashioned in precious metal from a fingerprint of your loved one or footprint of an infant. Ask for a brochure for additional information.



Living Glass Keepsakes

By suspending cremated remains within solid glass globes and pendants, Living Glass provides a unique method of memorializing your family and friends. Using an extremely small amount of cremated remains, every member of the family can have their own tangible keepsake that will last forever. Please ask for a brochure for all offerings.



Parting Stone Solidified Remains

Parting Stone offers families choosing cremation a 100% alternative to conventional ash. This process solidifies the full amount of remains into a form that resembles a collection of smooth stones. On average you can expect 40-80 stones and will vary based on the volume of remains provided. The appearance of the stones vary naturally from person to person in shape, color, and texture, making each collection uniquely beautiful. Inquire about pricing and options.



When Your Choice Is Cremation

Understanding the Cremation Process

Cremation is the process of reducing the body to bone fragments through the application of intense heat. This usually takes two to three hours and occurs in a special type of furnace known as a cremation retort. The remaining fragments are then processed into a finer substance and placed in an urn which holds the cremated remains permanently.

Your deceased family member never leaves our care

Within the greater Cincinnati area, we are among the few who operate our own crematory inside our clean and secure facility. Your loved one will be handled with a Tufts Schildmeyer staff member throughout the entire process.

Our staff members are certified

Our licensed personnel adheres to strict standards such as the Cremation Code of Ethics by CANA, which provides advanced certifications to our staff ensuring you of our commitment to dignity and honesty.

Understanding your options

Cremation is often considered to be an inexpensive, less complicated substitute for the "Traditional" funeral. Many people also believe that at the time of death only two basic choices exist: immediate cremation of the body or a complete funeral including viewing followed by burial. Actually, several options are available for those who prefer cremation, perhaps even more than with burial. Cremation and burial are both defined as "modes of disposition", methods of caring for the body and, as such, are just one part of a funeral. Also, the term traditional, when applied to funerals, simply refers to an accepted trend of choices in the past. As times change, trends change too. Today, the following cremation service opportunities exist for honoring your loved one: a gathering and ceremony, private gathering and ceremony, private gathering, memorial ceremony, scattering/burial ceremony or a direct cremation.

Cremation and Inurnment Packages

Traditional Service with Cremation Package 7295.00 to 8695.00

(Choose between Legacy of Life or Celebration of Life Package)

- Includes the professional services of the funeral director and staff, local removal, securing necessary authorizations, signatures and permits, embalming, other preparation of remains, visitation and gathering, funeral ceremony, flower vehicle for transporting and delivering service equipment and flowers, basic cremation container, and the cremation fee.



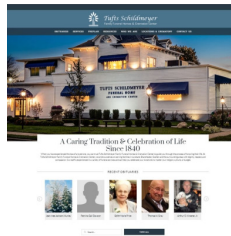
Traditional Service with Cremation

All packages include a Journey of Life video tribute (100-150 unframed photos), the obituary on the funeral home website, a choice of a register book package, and a choice of an urn.

Journey of Life Video Tribute



Online Memorial Page



Register Book Package



Legacy of Life Package

- Includes Stouffer Solid Poplar Casket

8695.00



Celebration of Life Package

- Choice of a Sonata Oak or Symphony Cherry *Rental* Cremation Casket

7295.00



Choice of any Legacy



Viridian Sky



Simplicity Walnut



Motorcycle Gas Tank



Metro Mantel



Living Urn Indoor



Ohio State



Bookshelf



Adore Bronze



Purple Tulip



Simplicity Midnight



Nirvana Adieu



Cremation and Inurnment Packages

Honoring of Life Memorial Service with Cremation Package 4795.00

Includes the professional services of the funeral director and staff, local removal, securing necessary authorizations, signatures and permits, refrigeration, private identification of the deceased, basic sanitation of the remains, visitation and gathering, funeral ceremony, flower vehicle for transporting and delivering service equipment and flowers, basic standard viewing cremation container, and the cremation fee.



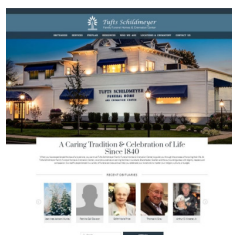
Memorial Service with Cremation

The package includes a Journey of Life video tribute (100-150 unframed photos), the obituary on the funeral home website, a choice of a register book package, a Life Tribute Portrait, and a choice of an urn.

*Journey of Life
Video Tribute*



*Online
Memorial Page*



*Register Book
Package*



*Life Tribute
Portrait*



Choice of any Remembrance urn

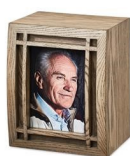
* See page 29 for additional Remembrance Urn choices



Cardinal



Modern Flag



Mission



Black Gold Circle



Elegance



Ocean Waves



Family Tree



Adria Chestnut



Statesman



Tilia



Raku



Modern Dove



Artisan Blue



Avondale Copper



Going Home



Blue
Rose



Hummingbird



Midnight
Iris



Avondale
Teal



Barbados

Cremation and Inurnment Packages

Simple Farewell Minimum Service with Cremation Package

2595.00

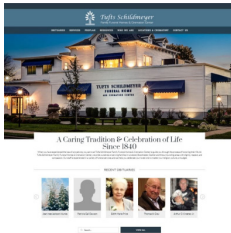
Includes the basic services of the funeral director and staff, local removal, securing necessary authorizations, signatures and permits, refrigeration, basic sanitation of remains, private identification of the deceased, and the cremation fee.



Minimum Service with Cremation

The package includes the obituary on the funeral home website, a basic standard viewing cremation container, and choice of an urn.

Online Memorial Page



Basic Standard Viewing Cremation Container



Choice of any Remembrance urn

* See page 27 for additional Remembrance Urn choices

green
product



Regal



Journey Natural Earth



Avondale Slate



Adria White



Cultured Marble



Antique English



Gone Fishing



Avondale Russet



Camouflage



Caroline



Purple Butterfly



Classic Pewter



Fairway to Heaven



Classic Rose



Fresh Flight



Sparta Purple



Living Urn



Elite Flag



Mother of Pearl



Green Leaf

30 *Ohio Revised Code*

Under Ohio Laws for Cremation, it states:

- A cremation cannot take place during the first 24 hours after death.
- A cremation cannot take place without the signed authorization on the Ohio Death Certificate by the attending physician of the deceased.
- State Registrar must issue a cremation permit prior to cremation.
- State of Ohio requires an authorization for cremation be signed and initialled by the legal next of kin.
- Prior to cremation, a private viewing of the deceased is required for positive identification.

DIRECT CREMATION

2195.00

- This charge includes the basic services of the funeral and staff, local removal, securing necessary authorizations, signatures and permits, refrigeration, basic sanitation of remains, private identification of deceased, and the cremation fee. This charge does not include any rites or ceremonies, cremation permit or urn for containment of cremated remains. If you would like to arrange a direct cremation, you may use an alternative container. Alternative containers encase the body and can be made of materials like fiberboard or composition materials.



Minimum cardboard container



Emerson Cremation Casket



Vista Patriot



Vista Seashore



TransPorter
Woodgrain Exterior

Basic Standard Viewing Container

ADDITIONAL CHARGES NOT INCLUDED:

Temporary Urn Container	25.00
Emerson Tan Container	605.00
Simple Nature Container	550.00
Cremation Fee @ Crematory	300.00
Oversized Basic Standard Viewing Container	440.00
Vista Series Scenic Viewing Container	350.00
Basic Standard Viewing Container	210.00
Minimum Cardboard Container	100.00
Mailing or Shipping of Temporary Urn Container - (Priority Express USPS)	125.00
Mailing or Shipping of Urn - (Priority Express USPS)	price as quoted by USPS
Cremated Remains Storage	10.00/day
- For storage of Cremated Remains Commencing the 30th day after Cremation (per day) - scattering will occur after 60th day at Our Living Memorial Garden	
Urn for containment	price as chosen

Our Cremation Center

We operate our own state of the art cremation facility that is impeccably clean and secure. We are licensed and regulated by the State of Ohio, Environmental Protection Agency (EPA), Occupational Safety Health Administration (OSHA), Cremation Association of North America (CANA), and the Ohio State Board of Funeral Directors and Embalmers. Many other funeral Homes in our general service area sub-contract their cremation services to non-regulated, non-licensed and non-certified crematories that operate within the confines of concrete fabrication factories or in warehouses, garages, or cemeteries.

Tufts Schildmeyer adheres to strict standards such as the Cremation Code of Ethics by CANA, Certified Operators, Licensed Personnel, and the encouragement of a family's personal inspection. We are the first to offer special "witnessing" in our crematory that allow family members to be present at the start of the cremation process. We follow a strict tracking system that ensures each cremation is done without errors. We constantly monitor our tracking system and continue to maintain an A plus rating.

Honesty, integrity and quality have made Tufts Schildmeyer Cremation Services as the preferred choice among families of Brown, Butler, Clermont, Clinton, Hamilton, Highland and Warren Counties.



**Licensed Crematory
Operators**

**Tufts Schildmeyer Cremation Center &
Private witnessing area**



**Jeff
Sellars**



**Brian
Purcell**



Tel: (513) 781-4726

Web: monumentscincinnati.com

Email: info@monumentscincinnati.com

Riverview Monument Co. by Tufts Schildmeyer is a full service memorial provider of top quality Granite and Bronze Memorials at an affordable price. Riverview Monument is part of the Tufts Schildmeyer Family of Services, We have established a relationship with your family by servicing your funeral needs, so it is natural for us to assist in this final process of memorialization. We are the same caring, trusted, and compassionate people you already know, Let us assist you with all your final needs for memorialization. As mentioned earlier, Riverview is your complete resource for granite and bronze. Riverview is quarry direct, which means we have constant access to inventory at very good prices from around the world, in most situations we are 20% to 30% below normal retailers, we guarantee to beat all prices from any other providers.

We understand how to memorialize your loved one. For many people the number of options and possibilities available in crafting the perfect granite memorial may either seem daunting or, if this is their first experience with memorials, they may not even realize the multitude of color, shape, and design options, WE DO.

No project is too small or too big for Riverview, today we specialize in providing the following products and services:

- Granite Cemetery Memorials
- Bronze Cemetery Memorials
- Home Garden Cremation Memorials
- Civic Memorials such as Veteran Memorials
 - Granite Signage
 - Custom Granite Wall Plaques
- Mobile Cemetery Sandblasting Lettering Service
 - Installation service of Memorial Products
- Full Art Design Department for Designing & Proofing Memorials
 - Virtual Computer Planner for selecting your memorial
 - Custom Full Service Laser Etching Service
 - Mobile Cleaning Granite Cleaning & Sealing Service
- Memorial Accessories such as vases and porcelain pictures



What you should know about GRANITE

Throughout history, mankind has memorialized those whom we've loved and respected. This tradition developed not only as a means to pay respects, but to record their history and honor their accomplishments so future generations would know who they were. Even the monument comes from the Latin word "Monere", meaning "to remind". The creation and placing of monuments even if only a pile of rocks, has been one of mankind's oldest traditions.

Many different types of materials have been used over the centuries to memorialize lost loved ones, but the only material that can stand the test of time is rock. Today the most popular monument is Granite.

There is no other natural stone used for commercial purposes that is harder or more difficult to break than granite.

And here's why:

- Granite is well known for its ability to resist erosion and its durability to withstand the elements in any environment
- Granite comes in such a wide range of colors that no other stone can match its natural beauty when polished.
- Granite's variety of colors and versatility allow for unlimited design options and the use of different techniques to produce different textures and looks makes granite the perfect medium for memorializing someone we loved.

Traditional Shapes of CEMETERY MEMORIALS



Upright Monuments

Typically, these consist of 2 main pieces. The upright portion (called a die or tablet) and the bottom portion (called a base). Flower vases are common option and can be added on one or both ends.



Bevel Markers

Bevels, also called Pillow or Hickey Markers, are very simple memorials. The most common style, which is shown here, has a straight angled top surface. The back is generally 2 inches taller than the front.



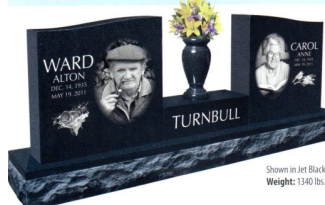
Slant Monuments

A slant monument has a steeply angled face but the back is perpendicular. The top of the slant is much thinner than the bottom. Slants may be used by themselves, or they may be placed on a base. Two major sub-categories exist - the traditional style has a front nosing and the western style (or full face) does not.

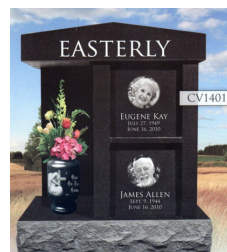


Grass Markers

Grass markers, also known as Flat or Flush markers, derive the name from the fact that they are normally installed into the ground, with only the top face showing. They are the simplest form of granite memorial and they are typically all straight without angled surfaces.



Shown in Jet Black
Weight: 1340 lbs.



What you should know about BRONZE

Modern bronzes

After its discovery (for the Middle East, around 700 BC) iron, and later steel, quickly replaced bronze in the ancient world as the metal of choice for weaponry and industry because it is harder and more durable. Today, bronze is used for making products ranging from household items such as doorknobs, drawer handles, clocks, and sculpture, but it is also still used in some industrial applications, such as engine parts, bearings, wire, statues, and cemetery memorials.

Cost versus DURABILITY

B ronze 50% more expensive	vs	G ranite Stone 50% less expensive
B ronze will not rust or corrode	vs	G ranite is the hardest rock in the world
Cemeteries only require B ronze	vs	Cemeteries will allow G ranite
BRONZE Personalization less options	vs	GRANITE Personalization more options

Traditional Designs of Bronze Memorials



Custom/Personalization "OUR LASER" "The very Best"

35

Today with the development of the Modern Laser more and more families are choosing this personalization method to bring their loved ones memorial to Life! WE Laser any image or design at an affordable price. Lasering is being chosen by most families for one simple reason, "They can make there memorial PERSONAL". Please ask our staff about this process and we will be happy to design a fitting memorial using this process.



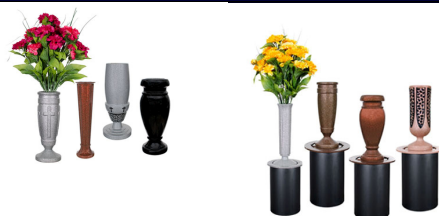
Cemetery Engraving "Another convenient Service"

A Riverview Stone Cutting Professional that will go to the cemetery and sandblast cut the final death date on an existing memorial, please let your Tufts Schildmeyer Funeral Director know and they can take care of this service for your family. Many times the final death date may need to be added to the existing stone and it is often forgotten, WE CAN HELP. The beginning prices for this service start at 300.00 for a standard month, day or year cutting.



Other Memorial products that we offer

Memorial Vases
Mounted or In-Ground



Porcelain Picture and
frames for mounting
on existing memorials

Choosing A Payment Plan

Credit Policy

Tufts Schildmeyer Family Funeral Homes is a small, family owned business like many others in our community. We operate on a **cash basis**, being totally dependent upon the families we serve for prompt payment by the day of the funeral service. The following payment methods were adopted to insure that we continue providing families with quality service.

Discounts, Financial Hardships and Value...

We encourage you to speak openly about any financial hardship you are experiencing. We take pride in serving all who call our firm, including those with financial difficulties. We can make suggestions to keep your costs low. No one has ever been turned away for lack of money. *Regardless of what you spend, our superior service quality is the same for all – we are here to help.*

Payment Methods

Check, Cash or Money Order

Many families use this mode of payment for consideration of the funeral expenses by the day of the funeral service.

Visa, Master Card, Discover or American Express

Families can use their own credit line to pay for the funeral expenses.

Insurance Assignments

Some families want to use insurance to finance the funeral service, with this option, an assignment is taken on the insurance policy by the funeral home and reassignment is made to Cincinnati Equitable. The insurance company will pay Cincinnati Equitable and the difference is sent to the beneficiary. There is a 3.5% (100.00 minimum) insurance processing fee for the administration of the insurance policy.

Pre-funded Trusts

Many families pre-pay for their funeral years in advance, saving themselves and their family the financial considerations.

Crowdfunding

Utilize the option on your loved ones' memorial page to accept payment donations. 7% of the donation(s) is directly given to hosting management fees.

Payments with Lending USA

Families may apply for term financing or payments through Lending USA with credit approval. Applications can be submitted online at www.lendingusa.com and with the assistance of your funeral director.

Aftercare & Preneed Services

One of our primary goals at Tufts Schildmeyer Funeral Homes is to ensure all of your post and pre funeral affairs are in order. From our experience, more and more people everyday are realizing the importance of pre planning. Pre planning your funeral is one of the most thoughtful things you can do for your family because it gives you peace of mind, allows you to express your wishes and can even relieve any financial obligations to your survivors at the time of death.

Our signature monthly aftercare phone call follow up with our families ensure all details will be carried out to the fullest. Let one of our directors talk to you and learn more about the advantages of pre planning your funeral arrangements as well as any questions about your post funeral needs.



Many families are in need of purchasing life insurance to help pay for final expenses. Families can pay using single payment or 3, 5 or 10 years to pay for the expenses. Please call for us for an appointment and let us explain your options.

Answers to

What comes

Next?

What is Probate?

When an Ohio resident dies owning probate property in the state, a legal proceeding to determine the deceased's assets, their value and the method of distribution to heirs is provided for by law. This proceeding is called probate. It occurs whether the person dies with or without a will. Probate takes place in the probate court of the county where the deceased property owner resided. If the decedent also owned property in another state, additional proceedings may be necessary in that state. Probate property is all property that is not covered by any contract providing for a succession on the death of the owner.

Why is probate necessary?

Probate is necessary to protect the assets of the decedent for the heirs, creditors and other persons due money from the estate, and to ensure the collection of money due to the estate. Probate provides for payment of outstanding debts, taxes and the expenses of administration and for the distribution of the remainder of the estate to the heirs.

How long does probate take?

Normally, it takes about 12 months to complete the probate of an estate. However, if a federal estate tax return is required, the administration of the estate can last more than a year. The audit of a federal estate tax return often takes another year, and an executor or administrator cannot safely distribute all of the estate assets until released from personal liability for estate taxes. An extraordinary case involving a contested will or complicated tax legislation may take three years or more. Claims against the estate may be made up to one year from the date of death.

Do I need a Will?

A properly drawn will assures you that, upon your death, your property will be distributed as you intended. It is important that you review your will periodically with your attorney in order to keep it up to date. A will is also the mechanism for choosing the executor and commonly provides for the nomination of a guardian where there are minor children. A will can also dispense with the requirement of a surety bond which an administrator might otherwise have to pay.

Wills must be filed in the probate court upon death. The law provides severe penalties for the withholding or destruction of a will.

If you do not make a will, your property will be distributed according to the Ohio Statute of Descent and Distribution.

Are your affairs in order?

Your check list:

1. Will: Make sure it is up to date. The clearer and more complete your will, the better.
2. Estate Planning: A professional estate plan can make a world of difference.
3. Living Will: With today's medical technology, there's a much greater chance that you may be alive but unable to make any decisions. A living will gives clear instructions as to what you would want done in these circumstances.
4. Appointment of Executor or administrator and granting of Power of Attorney: Who would you want to look after your affairs when you can't? It is best to discuss this responsibility with the person or persons you wish to designate.
5. Professional review and consultation: Consult a professional financial advisor about your will and estate planning. They can help you ensure that you've "covered all the bases".
6. Funeral Planning and Financing: Making, recording and financing your funeral plans through your funeral home is the most often overlooked aspect of getting your affairs in order.

Advanced Funeral Planning is the responsible and caring thing to do for your family. It gives your family directions at the worst time of their lives and gives them a sense of peace of mind. It is truly a gift to your family to advance plan your services.

Family Follow-up Checklist

- Notify family lawyer of death and request original will.
- Notify accountant/financial advisor and request documents.
- Contact the Social Security Administration regarding benefits.
- Notify life insurance companies to determine benefits and cancel policies.
- Contact financial institutions about accounts and safety deposit box.
- Contact investment institutions about accounts.
- Contact mortgage company about mortgage loans.
- Contact credit card companies to switch/cancel card.
- Contact employer to notify associates and inquire about benefits.
- Contact health care providers (hospice, nursing care, physicians)
- Contact auto insurance agent to cancel coverage and/or change policy.
- Contact auto loan/lease companies to reconcile accounts.
- Contact utilities to cancel or change billing status.
- Contact service providers (lawn care, cable TV, pest control, etc) to cancel service or change billing status.
- Cancel or change periodical subscriptions (magazines, newsletters, etc)
- Cancel memberships.
- Remove name/address from mailing and telemarketing.

Needing professional legal assistance?

gertz | law
YOUR FAMILY'S LAWYER
G E R T Z L A W . C O M

Gertz Law Firm
501 W. Loveland Avenue
Loveland, OH 45140
(513) 583-1549
gertzlaw.com

Taking Care of Your --- Companion



Companion Care
by Tufts Schildmeyer

Tel: (513) 334-3637

Web: petcremationcincinnati.com

Email: info@petcremationcincinnati.com

Companion Care Pet Cremation is brought to you by Tufts Schildmeyer Family Funeral Home & Cremation Center. With Companion Care you are assured the same quality, integrity, and choice we've offered families of the Greater Cincinnati area for over 185 years.

Our mission is simple, *To provide dignified and affordable pet cremation services to the families of the Greater Cincinnati area.* Pets are, after all, part of the family and for some, the only family members.



www.petcremationcincinnati.com



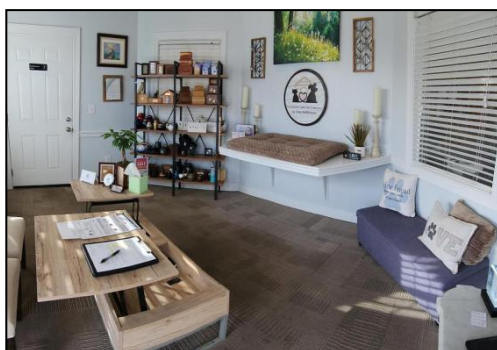
**129 N. Riverside Drive
(In historic Loveland)
Loveland, OH 45140
P: (513) 683-2430
F: (513) 683-9632**



**120 W. Main St.
(Across from FNB—Blanchester)
Blanchester, OH 45107
P: (937) 783-2458
F: (937) 783-5008**



**1668 St. Rt. 28
(At St. Rt. 28 & 48)
Goshen, OH 45122
P: (513) 722-2430
F: (513) 722-1049**



**Companion Care
Pet Cremation Center
(located on the grounds at
our Goshen location)**



**Tufts Schildmeyer
Cremation Center
(located on the grounds at
our Goshen location)**

Website: www.tuftsschildmeyer.com

Email: staff@tuftsschildmeyer.com

Copyright © Tufts Schildmeyer Family Funeral Homes & Cremation Center
Print Rev.4-2025